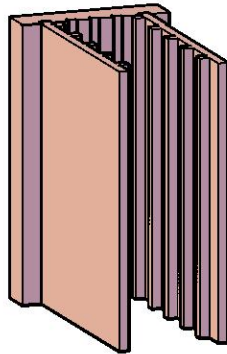


Top



North East Isometric

The southern wall in this presentation has “female” grooves. As one can see the southern wall could be set up and then either east or west wall inserted and the casing structure would stand with only two walls installed. The second wall could be installed and then the north wall sections lowered or installed as a “separator”.

Copyrights 2007  
Ted Whidden  
[www.SolomonSeries.com](http://www.SolomonSeries.com)